

INCANDESCENT ICE DETECTOR LIGHT - MAINTENANCE PRACTICES**1. General**

A. This section gives the procedures for the removal/installation of the incandescent ice detector light.

2. Ice Detector Light Removal/Installation

A. Remove Ice Detector Light (Refer to Figure 201).

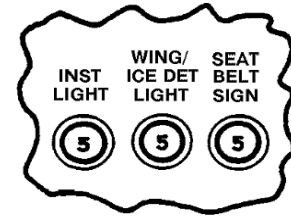
- (1) Remove three screws (8), lens retainer (7), and lens (6).
- (2) Press in slightly on bulb (9) and turn counterclockwise to remove bulb from socket (3).
- (3) Remove old sealer from housing assembly (10) and lens (6), taking care not to scratch lens.

B. Install Ice Detector Light (Refer to Figure 201).

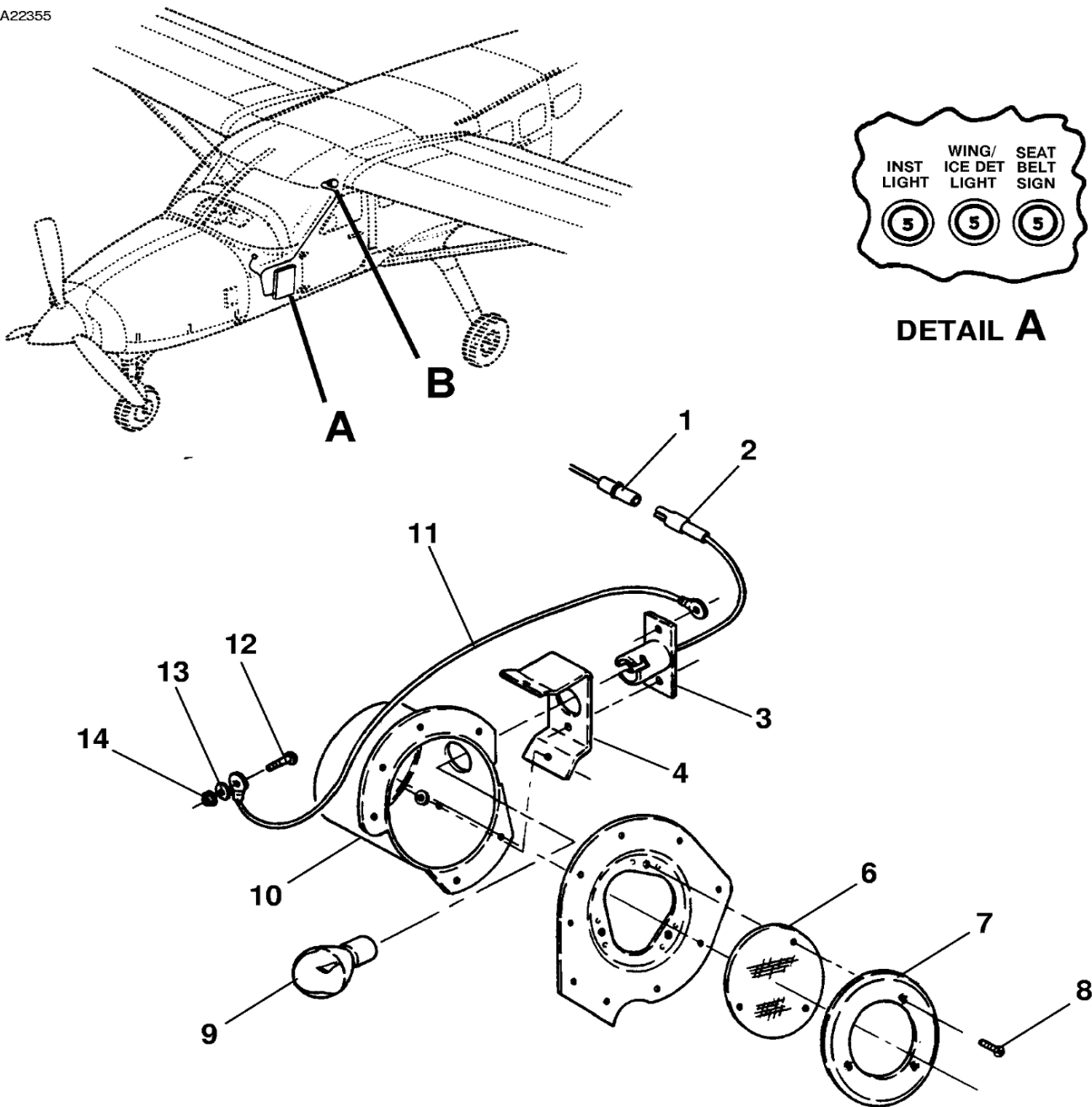
- (1) Insert bulb (9) into socket (6), press in slightly, and turn clockwise.
- (2) Apply Acryl-R-SS2S sealant, or equivalent, around opening in housing assembly (10). Take care to apply sealant sparingly.
- (3) Press lens (6) into place and secure lens retainer (7) using three screws (8).

Figure 201 : Sheet 1 : Wing Ice Detector Light Installation

A22355



DETAIL A



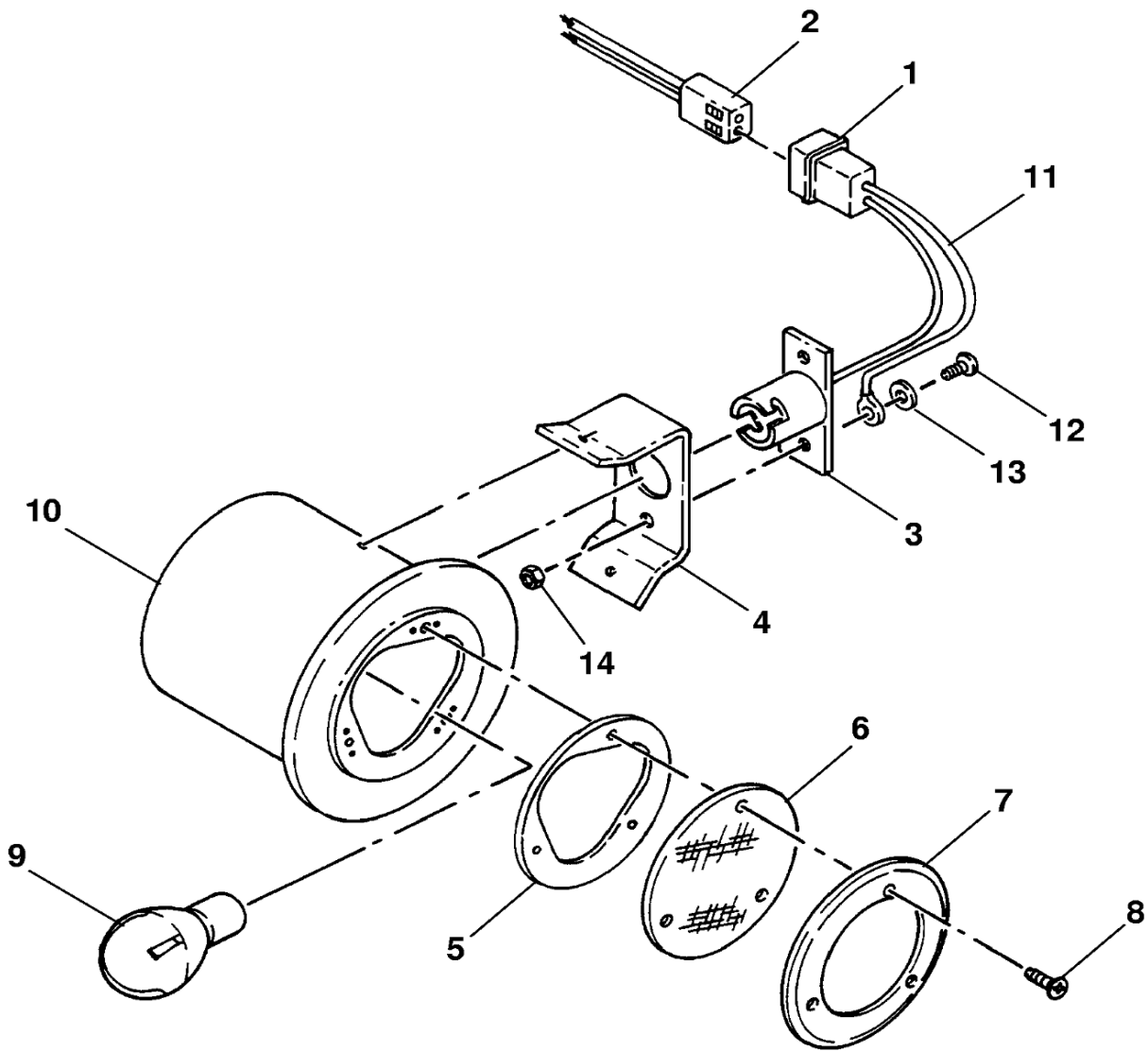
DETAIL B

- | | |
|------------------|-----------------|
| 1. RECEPTACLE | 9. BULB |
| 2. PLUG | 10. HOUSING |
| 3. SOCKET | 11. GROUND WIRE |
| 4. BRACKET | 12. SCREW |
| 5. LENS | 13. WASHER |
| 6. LENS RETAINER | 14. NUT |
| 7. LENS | |
| 8. SCREW | |

26142046A
 A2614X1200
 B2614X1201

Figure 201 : Sheet 2 : Wing Ice Detector Light Installation

A22358



DETAIL B

AIRPLANES 208B0001 AND ON

- | | |
|------------------|-----------------|
| 1. RECEPTACLE | 8. SCREW |
| 2. PLUG | 9. BULB |
| 3. SOCKET | 10. HOUSING |
| 4. BRACKET | 11. GROUND WIRE |
| 5. GASKET | 12. SCREW |
| 6. LENS | 13. WASHER |
| 7. LENS RETAINER | 14. NUT |

2614X1202